

AGTYRE BULLETIN

ISSUE 5 JUNE 2018

BY VREDESTEIN TYRES

IN THIS ISSUE:

- **Tips to improve Agricultural Tyre Performance**
- **Australian Farm Facts:**
Agriculture's contribution to the Australian economy in focus
- **Product Focus:** Vredestein Flotation Trac
- **Breaking New Ground:** Our new Vredestein Traxion Concept Video



Helping you Improve Agricultural tyre performance

Keeping your tyres in good condition is vital for the optimal performance of any vehicle, and often even more so for agricultural tyres with the many different terrains and environments in which they are required to operate. Not only will looking after your tractor tyres benefit the overall performance of your machinery, but also impact positively on numerous other factors such as their longevity and fuel efficiency. It's not a case of 'fit and forget'; tyres need to be maintained.

With this in mind, we've compiled a few tips to help you both keep an eye on your tyres' condition and ensure they are ready to go the extra mile in the paddock, on the road - and everywhere in-between.

1. Make sure your tyres are the correct ones for your equipment

This may sound obvious, but first up it pays to ensure the tyres that are fitted are the right ones for the job and for your rims and your particular vehicle! Agricultural tyres are technologically designed and built to perform on certain types of machinery and in particular conditions, as well as in the interests of optimal safety - so speak to an expert if you need help or advice about the tyre size and type that is best for your requirements.

2. Tyre pressure is key

Under- or over- inflated tyres can be both detrimental to your equipment and also performance. Tyre pressure should ideally be checked when the tyres are cold - although they do need to be monitored and adjusted as necessary as your tractor moves between the road and paddock or other surfaces.

Having a suitable gauge or other equipment (such as a wireless tyre pressure monitor or central tyre inflation system) especially designed to measure and adjust pressures as required, is essential. If you have more than one operator working a machine, make a plan available of how often and when to inflate or adjust tyre pressures. In need, always refer back to the manufacturer's manual for the advised pressures for your equipment in relation to load.

3. Do routine checks including for valve damage

Picking up damage quickly could save you money as well as ensure the safety of those operating your equipment. Checking for cuts, scrapes, stones and other damage on a daily basis will help you stay on top of the condition of your tyres and get repairs done

quickly, often avoiding further damage and costs. Also check for valve damage, which may show the tyre is slipping on the rim - in which case you will need to get the tyre checked by an expert. There are a couple of possible causes for valve damage including under-inflated tyres or the bead being incorrectly seated on the rim.

4. Wheel and tyre configuration

Correct wheel and tyre configuration for your tractor and load is key - allowing you to use low tyre pressures in the paddock for the best traction while keeping soil compaction to a minimum. Keep inspecting your tyres for wear patterns and work with your tyre dealer to optimise performance and tyre life.

5. Are your rims right?

As with having the correct tyres for your equipment, make sure that your rims are the right ones for your tyres. Rims that are too narrow can cause damage to the tread and sidewall (and may result in them separating from the sidewall), as well as reducing traction. Think of how a rim and tyre work to create the right profile for a tyre. If you choose an inappropriate match, the profile of the tyre isn't going to be shaped right as it moves into contact with the ground leading to potential issues with sidewall stress, irregularities with lug wear, or worse.

6. Check for Wheel Spinning

Tractor tyres spinning are often caused by the wheel weights being too light and will impact on performance, wear and cause potential damage to the tyres' lugs in heavy operation such as land forming. Increasing weights and ensuring inflation is correct for your load may be remedies. Make sure you have the tractor operating at optimal speed/gear for the application to ensure the tyre is not bearing the brunt of excesses of torque where the application requires a fine balance of factors to get it right. Seek help from your tyre expert if you are in doubt and they will be able to work with you to optimise set up.

7. Keep your tyres clean

Your agricultural tyres are built with excellent self-cleaning properties and tread pattern, to ensure maximum traction and performance. However, grease and oil or other pesticides or chemicals can cause damage to the rubber, and should be cleaned off regularly.



Agriculture's contribution to the Australian economy in focus



Despite the multitude of demanding conditions faced by Australian farmers and agricultural producers - be they unforgiving weather patterns, falling international commodity prices and competition or changes to trading provisions - it remains a fact that this industry continues to produce outstanding outputs of great significance to the national economy.

Farming and agriculture is also very much at the forefront of many environmental initiatives and involved in research and development to improve and adapt outputs and practices.

The following statistics and information highlight just a few of points of interest that

may help you keep abreast of current facts and figures within the industry.

- The gross value of Australian agriculture increased to \$58.1 billion in 2015–16 and 77% of which (\$44.8 billion) was exported. In that same period, the top three agricultural commodities nationally and ranked by gross value were cattle and calves, wheat and milk.¹
- More than 99% of Australia's agricultural businesses are wholly Australian owned, owning 88% (or 343.3 million hectares) of Australia's agricultural land.²
- As of May 2017, 304,200 people were employed in the Australian farm sector, accounting for about 3% of the national workforce.³





Agriculture's contribution to the Australian economy in focus *(continued)*



- At 30 June 2016 there were 371 million hectares of agricultural land in Australia, a 1.4% increase on the previous year.⁴
- The sophistication of Australia's agricultural land management continues to increase, with ongoing reductions in the intensity of agricultural chemical use, more careful use of fertilisers and more flexible approaches to grazing management to reduce erosion and increase productivity.⁵
- Australian agriculture is becoming increasingly water efficient – with for example the Australian cotton industry achieving a 40% increase in water productivity over the past decade.⁶
- Efficiency gains through new technologies and farm management practices, achieved

on the back of research and development, have enabled Australian agriculture to stay a step ahead of our international competitors – returning average productivity growth of 2.7% -a-year over a 30-year period.⁷

¹ ABARES, Agricultural Commodities – June Quarter 2017

² ABS, Agricultural Land and Water Ownership, 2015–16, Catalogue No. 7127.0.

³ Australia's Farm Dependent Economy: Analysis of the role of Agriculture in the Australian Economy

⁴ Australian Bureau of Statistics, Land Management and Farming in Australia, 2015–2016, Catalogue No. 4627.0.

⁵ Department of Environment, Australia State of the Environment overview, 2016

⁶ Australian Grown Cotton Sustainability Report 2014

⁷ Australian Government Productivity Commission 2015, PC Productivity Update, July 2015.

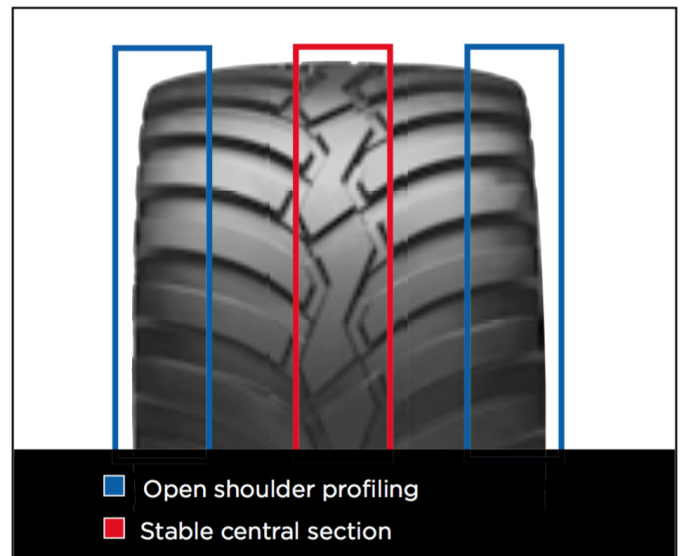


Vredestein Flotation Trac

Vredestein's flagship flotation tyre ensures minimal rutting through state-of-the-art design.

The unique Vredestein Flotation Trac – along with all Vredestein flotation tyres – is the result of the very latest developments in the field of agricultural machinery and tyre construction. Providing first-class performance, the Flotation Trac combines a high load carrying capacity with relatively low pressures.

The tread profile of the Flotation Trac is immediately recognisable by the **stable central section lugs**, and the open **shoulder profiling** which provides extra comfort, long life, and low rolling resistance.



The Flotation Trac's unique tread profile ensures excellent self-cleaning characteristics, and the flat tread contour, combined with the rounded shoulders gives optimal load distribution across the contact surface. Even load distribution ensures minimal rutting in the field, which preserves soil structure.

The Features & Benefits of the Flotation Trac:



Wide and flat tread contour with rounded shoulders **preserves the soil structure** and **minimises rutting and crop damage**



Stable central tread section with open shoulder design ensures **excellent operator comfort**, **optimal self-cleaning properties** and **enhanced traction characteristics**

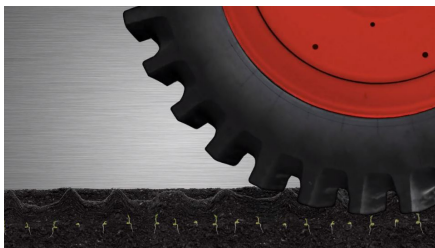


Strong sidewall and robust bead construction ensure **optimal durability** and **protection against punctures, cuts and abrasions**

Breaking New Ground

Introducing our new Vredestein Traxion Concept Video

Part of our commitment to Vredestein users in Australia is the development of videos to help you choose and make the best use of your equipment. Here is a new video we have just completed on the Traxion Concept Product: View it at <https://tyremax-5.wistia.com/medias/b316pi4zsj>



Limit of Liability and Disclaimer of Warranty: Tyremax Pty Ltd makes no representation or warranties with respect to the accuracy or completeness of the contents of this publication and specifically disclaims any implied warranties of merchantability or fitness for any particular purpose and shall in no event be liable for any loss of profit or any other commercial damage, including but not limited to special, incidental, consequential, or other damages. Contents and processes outlined in this document may change at any time at the sole discretion of Tyremax.